

Crosswise Convection Gas Convection Oven, 20 GN1/1 - 60Hz

ITEM # _____

MODEL # _____

NAME # _____

SIS # _____

AIA # _____


260725 (FCG20160)

 Gas Convection Oven
 20x1/1GN, crosswise - Saudi

Short Form Specification

Item No. _____

Main structure in stainless steel, with seamless joints in the oven cavity. Double-glazed door with tempered glass. Cavity lighting. Unique air-flow channel system. Atmospheric burner.

Cooking cycles: air convection, convection with 5 stage humidification. Max. temperature of 300°C.

Functional level: base, manual.

"Cross-wise" pan rack suitable for 20x1/1GN.

Supplied with n. 1 roll-in rack, 60mm pitch, and n. 2 roll-in rack slides.

Main Features

- Racks can be easily removed without the need for special tools.
- Unique air-flow system guarantees perfect distribution of heat throughout the oven cavity.
- Maximum temperature of 300°C.
- Food temperature probe available as accessory.
- Rapid cooling of oven cavity.
- Halogen lighting and "crosswise" pan supports allow clear and unobstructed view of the products being cooked.
- 5 Stage humidification control, to ensure perfect pastries and succulent roasts.
- Meets the requirements of CE, VDE and DVGW for safety.

Construction

- Access to all components from the front.
- Stainless steel oven cavity with rounded corners.
- Double-glazed door with tempered glass.
- External access door for electrical connections.
- All connections made on the left side below the oven.
- Integrated drain outlet.
- IPx4 water protection.

Included Accessories

- 1 of 60mm pitch roll-in rack for 20x1/1GN (included with the oven) PNC 922203

Optional Accessories

- Pair of 1/1GN AISI 304 stainless steel grids PNC 921101
- Support for 1/2GN pan (2pcs) PNC 921106
- Water softener with salt for ovens with automatic regeneration of resin PNC 921305
- Resin sanitizer for water softener (921305) PNC 921306
- Fat filter for gas 10 and 20 1/1 and 2/1 GN ovens (2 filters are necessary for 20-grid ovens) PNC 921700
- Probe for ovens 20x1/1 and 2/1GN PNC 921704
- Flue condenser for gas ovens 20x1/1GN PNC 921710
- Trolley for 20x1/1GN roll-in rack PNC 922132
- Base for 20x1/1GN roll-in rack PNC 922141
- External side spray unit (needs to be mounted outside and includes support to be mounted on the oven) PNC 922171

APPROVAL: _____



Electrolux
PROFESSIONAL

Crosswise Convection Gas Convection Oven, 20 GN1/1 - 60Hz

- 60mm pitch roll-in rack for 20x1/1GN (included with the oven) PNC 922203
- 80mm pitch roll-in rack for 20x1/1GN PNC 922205
- Pair of frying baskets PNC 922239
- Kit universal skewer rack and 6 short skewers for Lengthwise and Crosswise ovens PNC 922325
- Universal skewer rack PNC 922326
- Smoker for lengthwise and crosswise oven (4 kinds of smoker wood chips are available on request) PNC 922338

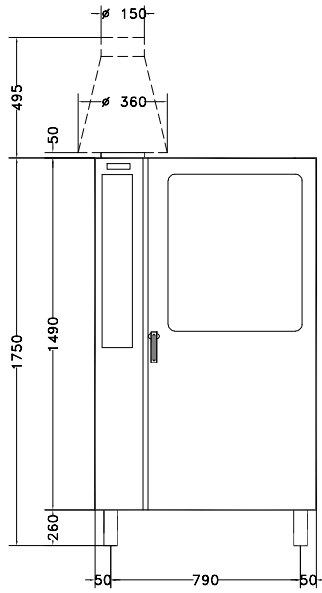


Crosswise Convection
Gas Convection Oven, 20 GN1/1 - 60Hz

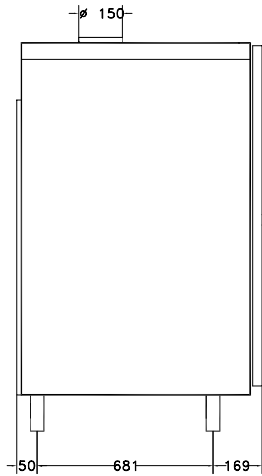
The company reserves the right to make modifications to the products without prior notice. All information correct at time of printing.

2020.05.21

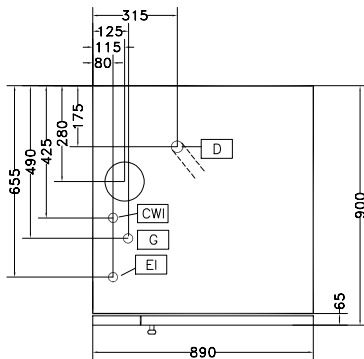
Front



Side



Top



- CW11 = Cold Water inlet 1
 CW12 = Cold Water Inlet 2
 D = Drain
 EI = Electrical inlet (power)
- G = Gas connection

Electric

Supply voltage:	
260725 (FCG20160)	220-230 V/1 ph/60 Hz
Auxiliary:	1 kW
Electrical power max.:	0.5 kW

Gas

Gas Power:	35 kW
-------------------	-------

Capacity:

Shelf capacity:	20
------------------------	----

Key Information:

External dimensions, Width:	890 mm
External dimensions, Height:	1700 mm
External dimensions, Depth:	900 mm
Net weight:	246.2 kg
Height adjustment:	80/0 mm
Functional level:	Basic
Type of grids:	1/1 Gastronorm
Runners pitch:	60 mm
Cooking cycles - air-convection:	300 °C
Internal dimensions, width:	590 mm
Internal dimensions, depth:	503 mm
Internal dimensions, height:	1350 mm