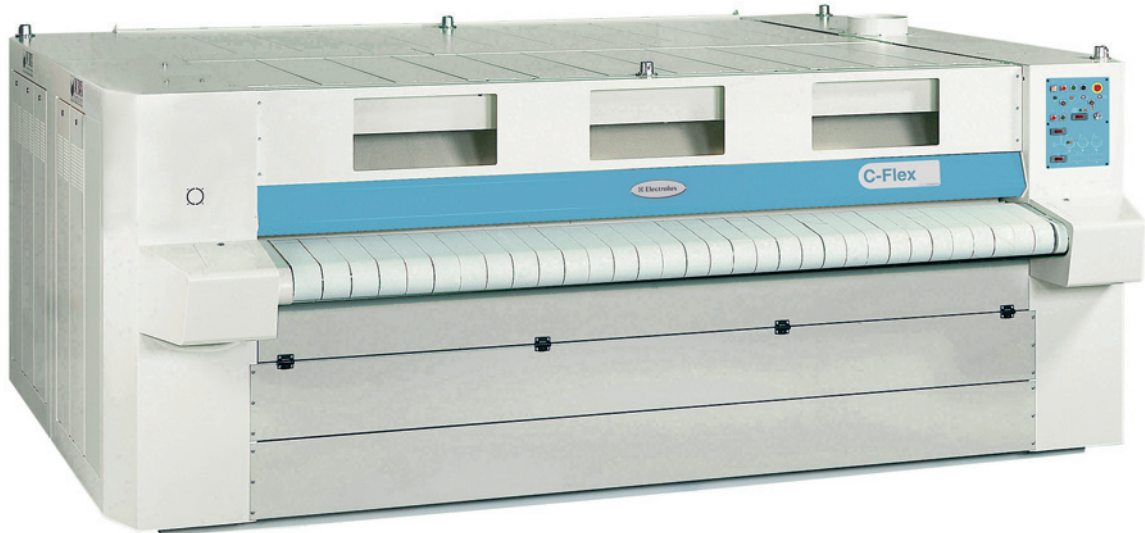


# Heavy duty flatwork ironer

## C-Flex 900, 1200



### Features and benefits

- Chest type industrial ironer with mobile chest and fixed roll, offering a constant pressure and a maximum ironing surface for the utmost ironing quality
- Steam or thermal fluid heating
- The unique design of the chest and roll combined with an improved thermal insulation give a thermal output close to 97%
- Up to three chest can be mounted together for a 50m/min maximum ironing speed
- Simple and reliable drive, possible thanks to the fixed roll technology
- One adjustable suction fan per roll for an improved vapor suction
- Maxpress® fitting for an optimum roll and chest contact and an optimized vapor extraction

### Main options

- Stainless steel Maxpress® fitting for an extended longevity
- Nomex padding withstand temperatures above 180°C
- Extra insulation of the casings for a lower energy consumption and an improved working environment
- Vacuum feeding table for an easier use
- Preset ironing speeds or special speed ranges to customize the ironing to the user specificities
- Connection with feeding and folding systems

| Main specifications     |                      |       | C-Flex 900             | C-Flex 1200                  |
|-------------------------|----------------------|-------|------------------------|------------------------------|
| Max. water evaporation* |                      | l/h   | 205-795                | 210-1260                     |
| Cylinder                | number               |       | 1-3                    | 1-3                          |
|                         | diameter             | mm    | 900                    | 1200                         |
|                         | length               | mm    | 2700, 3000, 3300, 3500 | 2100, 3000, 3300, 3500, 4200 |
| Ironing speed**         |                      | m/min | 4-51                   | 6-51                         |
| Heating                 | steam consumption*** | kg/h  | 240-960                | 295-1530                     |

\* 12 bars steam heating, smallest – biggest machine and 100% cylinder use, see detailed data

\*\* See detailed data for available speed ranges per dimension

\*\*\* 12 bar steam heating, smallest – biggest machine, see detailed data

| Electrical connections                    |                             |    | 927   | 930               | 933      | 935   |       |
|---|-----------------------------|----|-------|-------------------|----------|-------|-------|
| Voltage                                   |                             |    |       |                   |          |       |       |
|   | 400-415V 3AC 50Hz – 1 roll  | kW |       | 4.6               |          |       |       |
|   | 400-415V 3AC 50Hz – 2 rolls | kW |       | 12                |          |       |       |
|   | 400-415V 3AC 50Hz – 3 rolls | kW |       | 22                |          |       |       |
| Steam and air connections                 |                             |    |       |                   |          |       |       |
| Max. steam pressure                       |                             |    |       | kPa               | 1400     |       |       |
| Compressed air                            |                             |    |       | DN                | 15       |       |       |
| <b>1 roll</b>                             |                             |    |       |                   |          |       |       |
| Steam                                     |                             |    |       | DN                | 32       |       |       |
| Condensate                                |                             |    |       | DN                | 25       |       |       |
| Exhaust dia. (K)                          |                             |    |       | mm                | 200      |       |       |
| Evacuated air                             |                             |    |       | m <sup>3</sup> /h | 2000     |       |       |
| <b>2 rolls</b>                            |                             |    |       |                   |          |       |       |
| Steam                                     |                             |    |       | DN                | 40       |       |       |
| Condensate                                |                             |    |       | DN                | 32       |       |       |
| Exhaust dia. (K)                          |                             |    |       | mm                | 2 x 200  |       |       |
| Evacuated air                             |                             |    |       | m <sup>3</sup> /h | 2 x 2000 |       |       |
| <b>3 rolls</b>                            |                             |    |       |                   |          |       |       |
| Steam                                     |                             |    |       | DN                | 50       |       |       |
| Condensate                                |                             |    |       | DN                | 40       |       |       |
| Exhaust dia. (K)                          |                             |    |       | mm                | 3 x 200  |       |       |
| Evacuated air                             |                             |    |       | m <sup>3</sup> /h | 3 x 2000 |       |       |
| Sound level                               |                             |    |       |                   |          |       |       |
| Airborne sound level                      |                             |    |       | dB(A)             | 66       |       |       |
| Heat emission                             |                             |    |       |                   |          |       |       |
| % of installed power, standard insulation |                             |    |       |                   | 5        |       |       |
| % of installed power, extra insulation    |                             |    |       |                   | 3        |       |       |
| Performances and energy consumption       |                             |    |       |                   |          |       |       |
| <b>1 roll</b>                             |                             |    |       |                   |          |       |       |
| Max. water evaporation (14 bar)           |                             |    | l/h   | 205               | 225      | 250   | 265   |
| Steam average consumption (12 bar)        |                             |    | kg/h  | 240               | 270      | 300   | 320   |
| Average linen output (12 bar)*            |                             |    | kg/h  | 330               | 370      | 410   | 435   |
| Ironing speed**                           |                             |    | m/min | 5-15              |          |       |       |
| <b>2 rolls</b>                            |                             |    |       |                   |          |       |       |
| Max. water evaporation (14 bar)           |                             |    | l/h   | 410               | 450      | 500   | 530   |
| Steam average consumption (12 bar)        |                             |    | kg/h  | 480               | 540      | 600   | 640   |
| Average linen output (12 bar)*            |                             |    | kg/h  | 660               | 740      | 820   | 870   |
| Ironing speed**                           |                             |    | m/min | 9-27              |          |       |       |
| <b>3 rolls</b>                            |                             |    |       |                   |          |       |       |
| Max. water evaporation (14 bar)           |                             |    | l/h   | 615               | 675      | 750   | 795   |
| Steam average consumption (12 bar)        |                             |    | kg/h  | 720               | 810      | 900   | 960   |
| Average linen output (12 bar)*            |                             |    | kg/h  | 940               | 1110     | 1230  | 1305  |
| Ironing speed**                           |                             |    | m/min | 14-42             |          |       |       |
| Dimensions                                |                             |    |       |                   |          |       |       |
| <b>A</b>                                  | width                       | mm | 3900  | 4200              | 4500     | 4700  |       |
| <b>B</b>                                  | ironing width               | mm | 2700  | 3000              | 3300     | 3500  |       |
| <b>C</b>                                  | length 1 roll               | mm |       | 1685              |          |       |       |
| <b>C</b>                                  | length 2 rolls              | mm |       | 2955              |          |       |       |
| <b>C</b>                                  | length 3 rolls              | mm |       | 4225              |          |       |       |
| <b>D</b>                                  | height                      | mm |       | 1560              |          |       |       |
| Net weight                                |                             |    |       |                   |          |       |       |
| 1 roll                                    |                             |    | kg    | 3010              | 3200     | 3400  | 3530  |
| 2 rolls                                   |                             |    | kg    | 5980              | 6360     | 6760  | 7030  |
| 3 rolls                                   |                             |    | kg    | 8950              | 9550     | 10170 | 10600 |

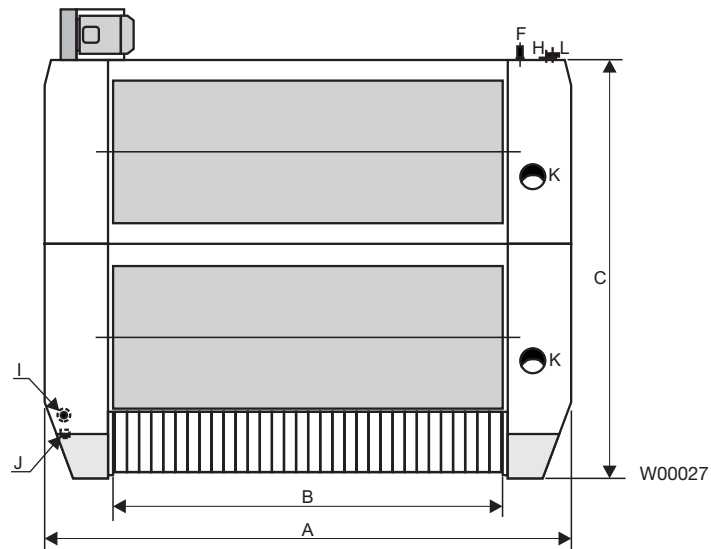
\* 50% residual moisture, 140 gr/m<sup>2</sup> polyester-cotton linen, 100% cylinder use

\*\* Other speed range available on request

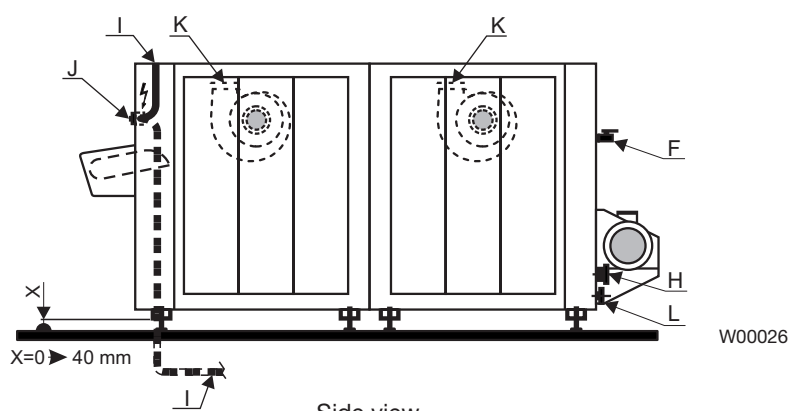
| Electrical connections                    |                   |  | 1221 | 1230  | 1233     | 1235  | 1242  |
|---|-------------------|--|------|-------|----------|-------|-------|
| Voltage                                   |                   |  |      |       |          |       |       |
| 400-415V 3AC 50Hz – 1 roll                | kW                |  |      |       | 7.9      |       |       |
| 400-415V 3AC 50Hz – 2 rolls               | kW                |  |      |       | 19.6     |       |       |
| 400-415V 3AC 50Hz – 3 rolls               | kW                |  |      |       | 30       |       |       |
| Steam and air connections                 |                   |  |      |       |          |       |       |
| Max. steam pressure                       | kPa               |  |      |       | 1400     |       |       |
| Compressed air                            | DN                |  |      |       | 15       |       |       |
| <b>1 roll</b>                             |                   |  |      |       |          |       |       |
| Steam                                     | DN                |  |      |       | 40       |       |       |
| Condensate                                | DN                |  |      |       | 32       |       |       |
| Exhaust dia. (K)                          | mm                |  |      |       | 200      |       |       |
| Evacuated air                             | m <sup>3</sup> /h |  |      |       | 2000     |       |       |
| <b>2 rolls</b>                            |                   |  |      |       |          |       |       |
| Steam                                     | DN                |  |      |       | 50       |       |       |
| Condensate                                | DN                |  |      |       | 40       |       |       |
| Exhaust dia. (K)                          | mm                |  |      |       | 2 x 200  |       |       |
| Evacuated air                             | m <sup>3</sup> /h |  |      |       | 2 x 2000 |       |       |
| <b>3 rolls</b>                            |                   |  |      |       |          |       |       |
| Steam                                     | DN                |  |      |       | 65       |       |       |
| Condensate                                | DN                |  |      |       | 50       |       |       |
| Exhaust dia. (K)                          | mm                |  |      |       | 3 x 200  |       |       |
| Evacuated air                             | m <sup>3</sup> /h |  |      |       | 3 x 2000 |       |       |
| Sound level                               |                   |  |      |       |          |       |       |
| Airborne sound level                      | dB(A)             |  |      |       | 66       |       |       |
| Heat emission                             |                   |  |      |       |          |       |       |
| % of installed power, standard insulation |                   |  |      |       | 5        |       |       |
| % of installed power, extra insulation    |                   |  |      |       | 3        |       |       |
| Performances and energy consumption       |                   |  |      |       |          |       |       |
| <b>1 roll</b>                             |                   |  |      |       |          |       |       |
| Max. water evaporation (14 bar)           | l/h               |  | 210  | 300   | 330      | 350   | 420   |
| Steam average consumption (12 bar)        | kg/h              |  | 295  | 360   | 395      | 420   | 510   |
| Average linen output (12 bar)*            | kg/h              |  | 355  | 500   | 550      | 585   | 710   |
| Ironing speed**                           | m/min             |  |      |       | 8-24     |       |       |
| <b>2 rolls</b>                            |                   |  |      |       |          |       |       |
| Max. water evaporation (14 bar)           | l/h               |  | 420  | 600   | 660      | 700   | 840   |
| Steam average consumption (12 bar)        | kg/h              |  | 590  | 720   | 790      | 840   | 1020  |
| Average linen output (12 bar)*            | kg/h              |  | 710  | 1000  | 1100     | 1170  | 1420  |
| Ironing speed**                           | m/min             |  |      |       | 14-43    |       |       |
| <b>3 rolls</b>                            |                   |  |      |       |          |       |       |
| Max. water evaporation (14 bar)           | l/h               |  | 630  | 900   | 990      | 1050  | 1260  |
| Steam average consumption (12 bar)        | kg/h              |  | 885  | 1080  | 1185     | 1260  | 1530  |
| Average linen output (12 bar)*            | kg/h              |  | 1065 | 1500  | 1650     | 1755  | 2130  |
| Ironing speed**                           | m/min             |  |      |       | 14-43    |       |       |
| Dimensions                                |                   |  |      |       |          |       |       |
| <b>A</b> width                            | mm                |  | 3300 | 4200  | 4500     | 4700  | 5400  |
| <b>B</b> ironing width                    | mm                |  | 2100 | 3000  | 3300     | 3500  | 4200  |
| <b>C</b> length 1 roll                    | mm                |  |      |       | 1985     |       |       |
| <b>C</b> length 2 rolls                   | mm                |  |      |       | 3555     |       |       |
| <b>C</b> length 3 rolls                   | mm                |  |      |       | 5125     |       |       |
| <b>D</b> height                           | mm                |  |      |       | 1760     |       |       |
| Net weight                                |                   |  |      |       |          |       |       |
| 1 roll                                    | kg                |  | 3140 | 3860  | 4100     | 4360  | 4820  |
| 2 rolls                                   | kg                |  | 6860 | 7700  | 8200     | 8530  | 9700  |
| 3 rolls                                   | kg                |  | 9400 | 11630 | 12400    | 12900 | 14650 |

\* 50% residual moisture, 140 gr/m<sup>2</sup> polyester-cotton linen, 100% cylinder use

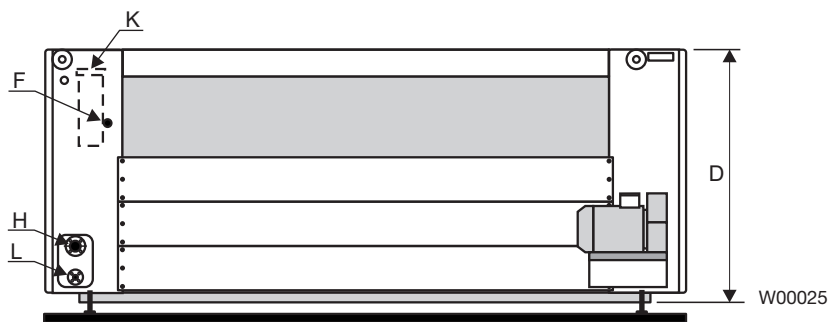
\*\* Other speed range available on request



Top view



Side view



Rear view

- |                               |                                |
|-------------------------------|--------------------------------|
| <b>F</b> Compressed air inlet | <b>J</b> Circuit breaker       |
| <b>H</b> Steam inlet          | <b>K</b> Vapor exhaust         |
| <b>I</b> Electric connection  | <b>L</b> Condensate connection |

